



**UNITED STATES DEPARTMENT OF AGRICULTURE  
FOREST SERVICE  
WILLAMETTE NATIONAL FOREST  
SPRINGFIELD, OREGON**

**ORDER # 06-18-10-24-17**

**FOREST ORDER  
MOSS MOUNTAIN FIRE EMERGENCY AREA CLOSURE**

Pursuant to 16 U.S.C. § 551 and 36 CFR § 261.50 (a) and (b), and to provide for public safety, the following acts are prohibited on the National Forest System (“NFS”) areas, roads, and trails described below within the administrative boundaries of the Willamette National Forest. Refer to exhibit A for the map and exhibit B for trails, and recreation sites that are closed. Also note the roads and trails outside of the boundary that will be closed with this Order. This Order is effective on July 20, 2024, through November 15, 2024, unless otherwise rescinded sooner.

**PROHIBITIONS:**

1. Being on the road. **36 CFR § 261.54(e)**
2. Being on a trail **36 CFR § 261.55(a)**
3. Entering into or being upon National Forest System Lands closed for the protection of public health and safety. **36 CFR § 261.53(e)**

**CLOSURE AREA:**

The closure area is located within the State of Oregon, Lane and Klamath Counties, and within the Administrative Boundaries of the Willamette National Forest. The closure applies to the NFS areas, roads, and trails and trailheads described below. The closure area is depicted on the attached map, which is incorporated into this order as “Exhibit A”. All areas, roads, trails, campgrounds, and rec sites in this closure area are closed. All roads forming the boundary of the closure area are included in the closure. Recreation sites, trails and campgrounds closed by this order are depicted in “Exhibit B”.

**Area Closure Description**

The closure boundary starts at the junction of the Diamond Peak Wilderness boundary and the Willamette National Forest boundary in Township 23 S, Range 6 E, Section 7. The closure follows the Diamond Peak Wilderness boundary to the south to where it meets Forest Service (FS) Road 23. The closure boundary then follows FS Road 23 northwest to its junction with FS Road 2308 and continues south along FS Road 2308 to its junction with FS Road 2120. The closure boundary proceeds east on FS Road 2120 to its junction with FS Road 23 then continues north along FS Road 23 to the Vivian Lake Trailhead (#3662) in Township 23 S, R 5 E, Section 15. The closure boundary then follows the Diamond Peak Wilderness boundary south then east to the boundary of the Willamette National Forest. The closure boundary then follows the Willamette National Forest boundary north back to its junction with the Diamond Peak Wilderness boundary.

- Outside of the closure boundary the trailheads and trails listed in “Exhibit B” are closed.

**EXEMPTIONS:**

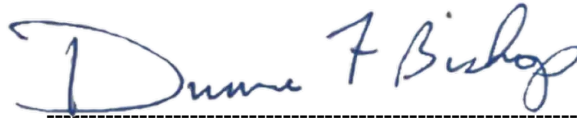
Pursuant to 36 CFR § 261.50(e)(1) and (4), the following persons are exempt from this Order:

- (1) Persons with Forest Service Permit No. FS-7700-48 (Permit for Use of Roads, Trails, or Areas Restricted by Regulation or Order) specifically exempting them for this Order.
- (2) Any Federal, State, or Local Officer, or member of organized rescue or fire fighting force in the performance of an official duty.

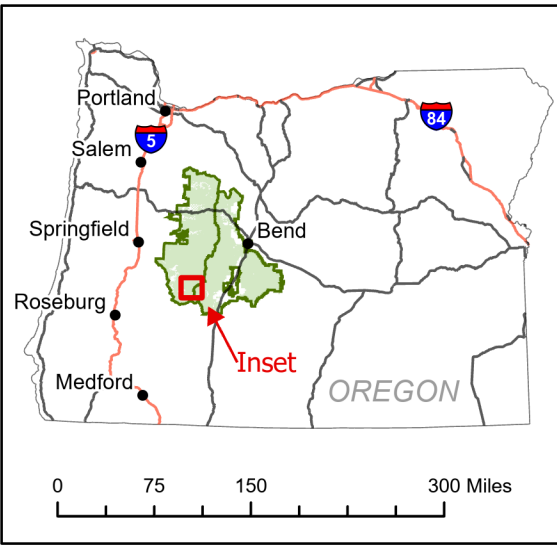
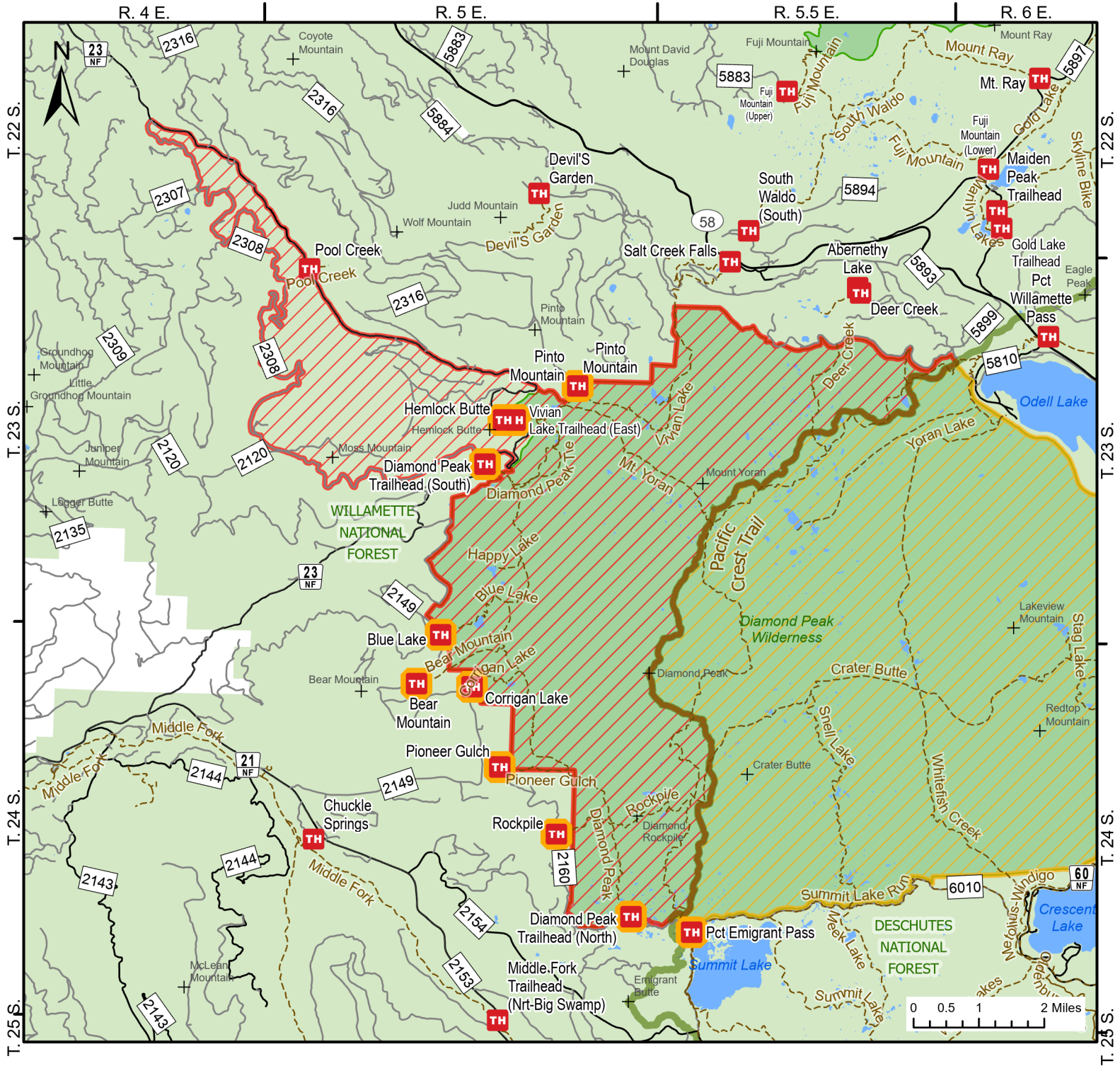
These prohibitions are in addition to the general prohibitions in 36 CFR Part 261, Subpart A.

**Violations of these prohibitions are punishable by a fine of not more than \$5,000.00 for an individual or \$10,000.00 for a corporation or imprisonment for not more than six months or both. 16 U.S.C. § 551 and 18 U.S.C. § 3551, 3571, and 3581.**







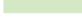
Executed in Springfield, Oregon on this 20th day of July 2024.

A handwritten signature in blue ink that reads "Duane F Bishop". The signature is written in a cursive style and is positioned above a horizontal dashed line.

Duane Bishop  
Forest Supervisor  
Willamette National Forest



**Moss Mountain Fire Closure Exhibit A**  
**Closure Number 06-18-10-24-17**  
**Willamette National Forest 541-225-6300**

-  Site Closure
-  Moss Mountain Fire Closure Willamette National Forest
-  Fire Closure Deschutes National Forest
-  Trails
-  USFS Admin Boundary
-  Wilderness
-  National Forest Land



Moss Mountain Fire Closure Exhibit B Closure Number 06-18-10-24-17 Willamette National Forest

**Closed NFS Trails:**

<b>3602</b>	<b>Bear Mountain</b>
<b>3645</b>	<b>Blue Lake</b>
<b>3654</b>	<b>Corrigan Lake</b>
<b>3699</b>	<b>Diamond Peak</b>
<b>3620</b>	<b>Hemlock Butte</b>
<b>2000</b>	<b>Pacific Crest Emigrant Pass</b>
<b>3684</b>	<b>Pinto Mountain</b>
<b>3630</b>	<b>Pioneer Gulch</b>
<b>4228</b>	<b>Pool Creek</b>
<b>3632</b>	<b>Rockpile</b>
<b>3662</b>	<b>Vivian Lake</b>

**Closed NFS Campgrounds and Rec Sites:**

<b>SITE_NAME</b>	<b>SITE_TYPE</b>
<b>Bear Mountain TH</b>	Trailhead
<b>Blue Lake TH</b>	Trailhead
<b>Corrigan Lake TH</b>	Trailhead
<b>Diamond Peak TH</b>	Trailhead
<b>Hemlock Butte TH</b>	Trailhead
<b>Pacific Crest Emigrant Pass TH</b>	Trailhead
<b>Pioneer Gulch TH</b>	Trailhead
<b>Pinto Mountain TH</b>	Trailhead
<b>Pool Creek TH</b>	Trailhead
<b>Rockpile TH</b>	Trailhead
<b>Vivian Lake TH</b>	Trailhead